

YEAR 2007

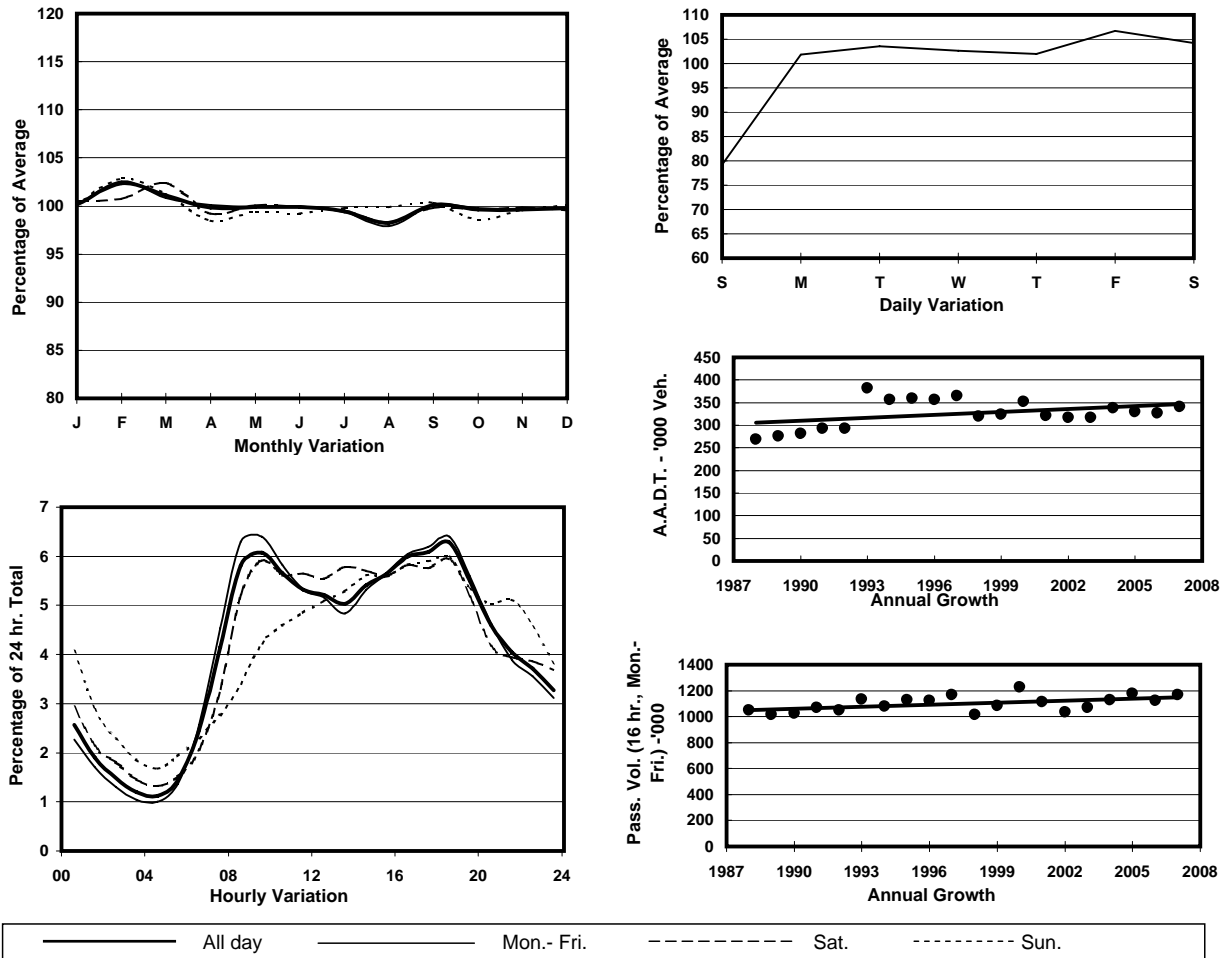
Location

Screenline K-K(West end of Kwun Tong)

Stations on Cordon/Screenline

3004, 4216, 4217, 4218 and 4219

1. TRAFFIC FLOW VARIATION AND GROWTH



2. TRAFFIC CHARACTERISTICS (BY DIRECTION)

Parameter	All - Day	Mon. - Fri.	Sat.	Sun.
EAST BOUND				
A.A.D.T.	176240	183990	185720	142000
R 12 / 24 - %	66.5	68	65.4	58.4
R 16 / 24 - %	84.7	86	82.8	79
AM Peak Hour	0900-1000	0900-1000	0900-1000	0900-1000
One-way flow at AM peak hour	11130	12380	11210	5720
T - % (AM)	-	13.1	-	-
PM Peak Hour	1800-1900	1800-1900	1800-1900	1800-1900
One-way flow at PM peak hour	11170	11790	11200	8900
T - % (PM)	-	9.8	-	-
Prop.of commercial vehicles - 16 hr.	-	13.7	-	-

WEST BOUND				
A.A.D.T.	164960	172480	174220	131170
R 12 / 24 - %	66.9	68	66.5	60
R 16 / 24 - %	84.4	85.3	83.4	79.4
AM Peak Hour	0900-1000	0900-1000	0900-1000	0900-1000
One-way flow at AM peak hour	9610	10420	10100	5800
T - % (AM)	-	10.2	-	-
PM Peak Hour	1800-1900	1800-1900	1800-1900	1600-1700
One-way flow at PM peak hour	10290	11040	10200	7690
T - % (PM)	-	10	-	-
Prop.of commercial vehicles - 16 hr.	-	13.2	-	-

3. OTHER INFORMATION AND COMMENT

4. Vehicle classification and occupancy - Monday to Friday

Time		Class of vehicle									
		Motor	Private	Taxi	Private	PLB	Goods veh.		Non	Fr. Bus	
		Cycle	Car		LB		Light	M & H	Fr. Bus	SD	DD
0700-0800	Pro	5.7	23.6	22.4	2.9	8.6	17.2	6.7	6.9	0.1	5.9
	Ocp	1.1	1.5	2.0	6.6	11.6	1.5	1.2	19.0	15.0	47.4
0800-0900	Pro	5.0	39.8	21.2	1.3	5.1	15.2	5.5	2.6	0.1	4.2
	Ocp	1.1	1.4	1.9	5.6	13.3	1.6	1.4	22.3	9.5	56.5
0900-1000	Pro	3.2	34.6	20.8	1.3	3.9	24.5	5.6	1.6	0.1	4.4
	Ocp	1.1	1.3	1.8	2.7	11.5	1.6	1.3	11.6	4.9	32.2
1000-1100	Pro	3.4	27.0	18.8	1.1	4.2	29.8	10.4	1.2	0.1	4.1
	Ocp	1.1	1.4	1.8	2.4	9.0	1.5	1.4	11.4	4.0	23.9
1100-1200	Pro	3.2	28.2	15.5	1.7	4.9	30.9	10.6	1.1	0.1	3.9
	Ocp	1.1	1.5	1.9	2.1	8.5	1.5	1.4	7.4	2.7	23.3
1200-1300	Pro	3.3	29.8	15.2	1.6	4.5	30.7	8.2	2.4	0.1	4.3
	Ocp	1.1	1.4	1.8	4.4	7.7	1.6	1.5	11.3	7.3	23.8
1300-1400	Pro	3.2	29.1	16.1	1.8	4.6	29.8	9.7	1.5	0.1	4.2
	Ocp	1.1	1.5	1.8	3.7	8.0	1.6	1.4	5.5	10.8	27.2
1400-1500	Pro	2.9	29.5	15.5	1.5	4.0	30.3	10.9	1.8	0.1	3.7
	Ocp	1.1	1.5	1.9	2.5	7.5	1.5	1.4	9.5	5.7	25.6
1500-1600	Pro	3.1	30.7	16.0	2.2	4.0	28.8	9.2	2.3	0.1	3.8
	Ocp	1.1	1.5	1.8	3.7	9.0	1.6	1.4	14.7	5.2	24.5
1600-1700	Pro	3.6	29.2	16.9	2.0	4.2	27.9	8.6	3.4	0.1	4.2
	Ocp	1.1	1.5	1.7	4.7	11.4	1.6	1.4	7.3	9.3	32.1
1700-1800	Pro	5.2	34.5	17.0	1.6	5.1	23.4	5.9	2.5	0.1	4.8
	Ocp	1.1	1.5	1.8	3.3	11.4	1.6	1.5	9.7	18.7	38.2
1800-1900 Peak Hour	Pro	5.6	44.4	15.3	0.7	5.3	18.9	4.0	1.5	0.1	4.3
	Ocp	1.1	1.5	2.0	3.1	14.2	1.6	1.5	18.2	20.4	56.7
1900-2000	Pro	3.3	52.2	16.5	0.5	7.1	11.5	3.0	1.5	0.1	4.4
	Ocp	1.2	1.4	1.9	2.4	12.4	1.5	1.4	15.3	5.2	43.3
2000-2100	Pro	4.5	46.0	22.5	0.3	7.4	10.3	2.5	0.9	0.1	5.6
	Ocp	1.1	1.5	1.9	1.4	11.1	1.6	1.5	8.3	3.4	31.6
2100-2200	Pro	5.5	40.6	27.5	0.4	7.9	9.3	2.7	0.7	0.1	5.3
	Ocp	1.1	1.5	1.8	3.1	10.0	1.7	1.5	7.4	10.0	30.8
2200-2300	Pro	5.2	40.3	28.7	0.3	9.5	7.0	2.3	0.6	0.1	6.2
	Ocp	1.2	1.6	2.0	1.3	8.9	1.6	1.3	3.3	7.7	28.1
16 hours	Pro	4.1	34.9	18.7	1.4	5.4	22.2	6.8	2.0	0.1	4.5
	Ocp	1.1	1.5	1.9	3.8	10.6	1.6	1.4	13.2	8.0	35.0

Legend

- Pro.** Proportion of vehicles in % (Sum may not add up to 100% due to figure rounding)
- Ocp.** Average occupancy of vehicles
- M & H** Medium and Heavy